

**12th INTERNATIONAL CONFERENCE
ON STRUCTURAL ANALYSIS
OF HISTORICAL CONSTRUCTIONS**

SAHC 2021

Online event, 29 Sep - 1 Oct, 2021

P. Roca, L. Pelà and C. Molins (Eds.)



**12th INTERNATIONAL CONFERENCE
ON STRUCTURAL ANALYSIS
OF HISTORICAL CONSTRUCTIONS**

SAHC 2021

Online event, 29 Sep - 1 Oct, 2021

A publication of:

**International Centre for Numerical
Methods in Engineering (CIMNE)**

Barcelona, Spain



ISBN: 978-84-123222-0-0

Printed by: Artes Gráficas Torres S.L., Huelva 9, 08940 Cornellà de Llobregat,
Spain

TABLE OF CONTENTS

| | |
|---------------------------------|------|
| Preface | 7 |
| Supporting Organizations..... | 9 |
| Organizers and Committees | 11 |
| Sponsors | 15 |
| Summary | 17 |
| Contents | 19 |
| Presented Sessions..... | 45 |
| Authors Index..... | 3661 |

PREFACE

The International Conference on Structural Analysis of Historical Constructions (SAHC) was first celebrated in Barcelona in 1995, followed by a second edition also in Barcelona in 1998. Since then, nine subsequent editions have been organized in different countries of Europe, America and Asia. The SAHC conference series is intended to offer a forum allowing engineers, architects and all experts to share and disseminate state-of-art knowledge and novel contributions on principles, methods and technologies for the study and conservation of heritage structures. Through all its successful past editions, the SAHC conference has become one of the topmost periodical opportunities for scientific exchange, dissemination and networking in the field.

During the last decades the study and conservation of historical structures has attained high technological and scientific standards. Today's practice involves the combination of innovative non-destructive inspection technologies, sophisticated monitoring systems and advanced numerical models for structural analysis. More than ever, it is understood that the studies must be performed by interdisciplinary teams integrating wide expertise (engineering, architecture, history, archeology, geophysics, chemistry...). Moreover, the holistic nature of the studies, and the need to encompass and combine the different scales of the problem –the materials, the structures, the building aggregates, and the territory – are now increasingly acknowledged. Due to all this, the study of historical structures is still facing very strong challenges that can only be addressed through sound international scientific cooperation.

Taking these ideas in mind, the 12th edition of the SAHC conference aimed at creating a new opportunity for the exchange and discussion of novel concepts, technologies and practical experiences on the study, conservation and management of historical constructions.

The present proceedings include the papers presented to the conference, which was finally celebrated on September 29-30 and October 1, 2021, in an on-line mode due to the world sanitary emergency situation created by the Covid-19 pandemic.

The conference included the following topics: history of construction and building technology; inspection methods, non-destructive techniques and laboratory testing; numerical modeling and structural analysis; structural health monitoring; repair and strengthening strategies and techniques; conservation of 20th c. architectural heritage; seismic analysis and retrofit; vulnerability and risk analysis and interdisciplinary projects and case studies.

The SAHC 2021 conference has been possible thanks to the large contribution of the scientific committee and reviewer panel who took care of selecting and review the papers submitted. The contribution of the different sponsors and supporting organizations is also acknowledged. Above all, the conference has been possible thanks to all the authors who have contributed with very valuable papers despite the difficulties caused by the world pandemic. New editions of the conference are already planned in normal face-to-face formats which, in the upcoming years, will provide new opportunities for sharing valuable knowledge and experience on structural conservation, as well as for keeping alive and fulfilling the purpose and aims of the SAHC conference series.

The Organizing Committee

SUPPORTING ORGANIZATIONS



**UNIVERSITAT POLITÈCNICA
DE CATALUNYA
BARCELONATECH**

Universitat Politècnica de Catalunya
(UPC), Barcelona, Spain

CIMNE 



Center for Numerical Methods in
Engineering (CIMNE), UPC, Spain



ICOMOS
international council on monuments and sites

International Council on Monuments
and Sites (ICOMOS)


Iscarsah
International Scientific Committee on the Analysis and
Restoration of Structures of Architectural Heritage

International Scientific Committee for
Analysis and Restoration of Structures
of Architectural Heritage of ICOMOS
(ICOMOS / ISCARSAH)

AN INNOVATIVE SHELL STRUCTURE IN CODOGNO (ITALY) EVALUATION OF STRUCTURAL AND SEISMIC PERFORMANCE

PIERANGELO BRUGNERA¹, M. GRAZIA COSTA¹, GIULIO MIRABELLA-ROBERTI^{2*}

¹ SACEE s.r.l. – Dept. Structural Design (DPS)
piazza Luigi di Savoia, 22 – 20124 Milano (MI), Italy
e-mail: {pierangelo.brugnera, grazia.costa}@sacee.it – <https://www.sacee.it>

² Dept. of Engineering and Applied Sciences (DISA), University of Bergamo
viale Marconi, 5 – 24040 Dalmine (BG), Italy
e-mail: giulio.mirabella@unibg.it – <https://disa.unibg.it> (*corresponding author)

Keywords: Hypar, saddle shaped shell, structural assessment, prefabrication

Abstract. *The saddle-shaped shells, or hyperbolic paraboloids, often joined together to form a pitched roof or an inverted umbrella, were used by many pioneers in structural architecture, such as Félix Candela, which introduced a very innovative use of reinforced concrete in thin layers or together with some reticulated ribs.*

An innovative semi-prefabricated building system was developed in Italy in the years '30 of XX cent by a very active brick factory near Piacenza, RDB: the SAP system, that allowed building curved surfaces by prefabricating light elements. After WW2, this technique was applied also for the new structures covering wide spaces for the developing industry or also for public leisure, using prefabricated panels of the desired length. A particularly interesting application was the BISAP (double-SAP) panel that could be adapted for building large shells.

In Codogno (LO), Italy, the BISAP panels were employed to cover a large sports hall, spanning about 37 × 26 m, without intermediate supports, resting (mainly) on the four corner pillars. Border pitch beams sustain at the top two crossed beams that separate (and support) the four hypar fields. On the four sides, two rafter beams are connected by horizontal prestressed tie beams, in order to minimize displacements and assure the preservation of the original shape.

The first aim of the structural analysis was to assess the static conditions of the roof under the service loads assigned by Italian code for SLS, and then to evaluate seismic vulnerability at ULS of the whole sports hall, being a public space subjected to particular safety provisions. The FE code used (Straus7) allowed a very careful discretization of the orthotropic slab with the correct inclination and twist of the ribs, giving a reliable forecast of the behavior also in seismic conditions: the dynamic analysis of the modal shapes gives a satisfactory response of the shell, which maintains nearly unchanged his shape during free vibration modes. The seismic safety of the structure can be then increased by simply augmenting the stiffness of the four corner supports, where shear action is concentrated, by adding ribs to the L-shaped sections to form cross shaped ones. In this way also the slenderness (and weakness) of additional intermediated pillars could be overcome.

1 INTRODUCTION

In September 2018, the Municipality of Codogno charged SACEE s.r.l. to study a solution for improving the usage of the sport-hall, a public property built in 1975 as an annex to the secondary school, but over time more and more exploited as public space for sports events.

Some of the problems regarded the compliance to the codes for fire protection and for accessibility of disabled persons; moreover, a reorganization of accessory spaces was requested. A more general problem concerned the thermal and lighting comfort improvement, both for a better energetic behaviour and economic savings. In the meantime, the safety assessment of the structure was requested, in order to forecast the impact of the needed strengthening interventions.

The main building of the Codogno Sports Hall (see Fig. 1) is about 37×26 m wide, with no intermediate supports, resting (mainly) on the four corner pillars. Border pitch beams, forming four triangular tympana, sustains at the top two crossed beams that separate (and support) the four hyper fields. On each side, the two rafter beams are connected horizontally by prestressed tie beams, in order to minimize displacements and assure the preservation of the original shape. Some low-rise buildings, used as changing and service rooms, are contiguous to the main building on two sides but supported by independent structural systems.



Figure 1. The Codogno sport hall: aerial view (left) and the interior (right).

2 SUCCESS AND DECLINE OF THE HYPAR SHELLS

The shape of Codogno Sports Hall roof belongs to the family of surfaces composed by hyperbolic paraboloids, which were used by many pioneers in structural architecture after WW II, such as Félix Candela in Mexico, Arata Isozaky in Tokyo, P.L. Nervi and P. Belluschi in St. Francisco [1]. Very expressive architectural forms were obtained combining simpler geometrical shapes, with a very innovative use of reinforced concrete in thin layers or with some reticulated ribs.

In a suitable coordinate system, a hyperbolic paraboloid can be represented by the equation

$$\frac{x^2}{a^2} - \frac{y^2}{b^2} = z \quad (1)$$

In this system, the traces (or cross-sections) parallel to the xz - and yz -planes are parabolas and the level curves (traces parallel to the xy -plane) are hyperbolas (see fig. 2). The traces open downward along the x -axis and upward along the y -axis.

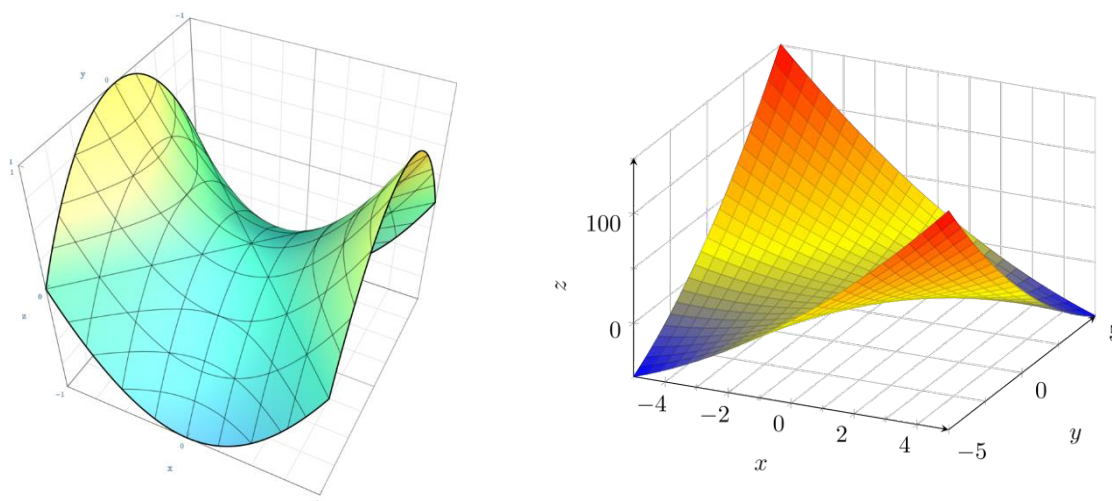


Figure 2: The surface of a hyperbolic paraboloid with $a = b = 1$ (on the left) and rotating axis's as in Eq. 2.

Rotating the reference system by 45° and putting $a = b = \sqrt{2}$ it is possible to represent the surface (1) also with the equation:

$$z = xy \quad (2)$$

Moreover, the hyperbolic paraboloid is also a doubly ruled surface: it contains two families of mutually skew lines. The lines in each family are parallel to a common plane, but not to each other. A hyperbolic paraboloid is a saddle surface, so its Gauss curvature is negative at every point. Therefore it is not developable, despite being a ruled surface. Never less, the fact that hyperbolic paraboloids are doubly ruled means that they are easy to construct using a series of straight structural members as formwork: that explain the success of this shape in the experimental development of 'structural architecture', relying on the innovative usage of cast-in-place concrete for the construction of thin shells.

The term *hypar* refers to a partial hyperbolic paraboloid, cut from the full infinite surface. It was introduced first by the architect Heinrich Engel in his 1968 book *Structure Systems* [2].

Fernand Aimond (1902-1984) can be considered as the father of the thin hypar concrete shells, who also formulated the membrane theory of the hypar. He designed and constructed several hypar roofs in France in the 1930s for aircraft hangars and workshops.

However, a master of hypars and joined hypars was a Spanish architect, engineer, structural artist and builder Felix Candela (1910-1997), who popularized the use of hypars for reinforced concrete construction [3]. Candela was influenced by Aimond but followed also the fundamentals of the Eduardo Torroja's work, a famous Spanish structural engineer renowned for his development of thin concrete shell structures.

He designed and built many innovative thin shell concrete roof structures. Most of these structures were built in Mexico in the 1950s and 60s. That was the 'golden era' for thin shell construction. Candela constructed over 300 shells during these decades. His thin concrete vaulted shells were made of reinforced concrete mixed and poured in situ, over wooden formwork. The thin shell roofs allowed the minimum thickness of concrete while having great strength and stiffness at the same time. In 1952 Candela started experimenting with the umbrella structures of four identical quadrants, called tympani. The shell geometry was created

by joining four straight-edged *hypars* whose sides rose upwards away from the central column (as if an umbrella blown upward).

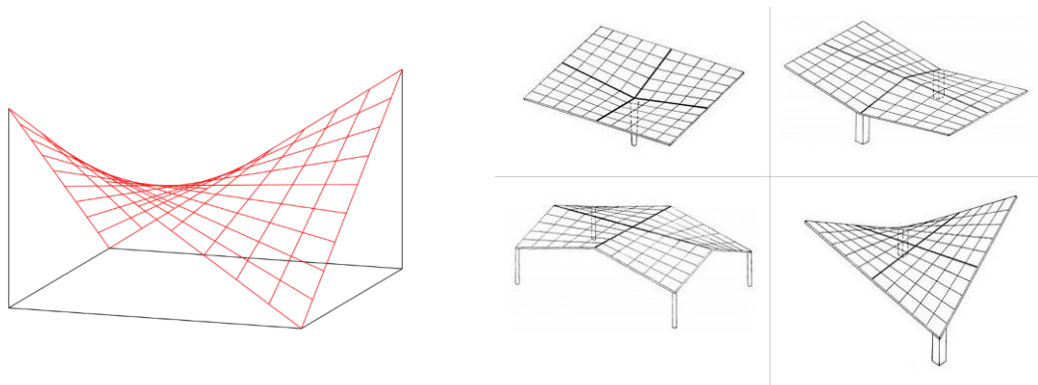


Figure 2. The *hypar* as ruled surface and four different *hypar* combinations.

One of his major works is the *Lomas de Cuernavaca Chapel* (“hills of Cuernavaca”), Mexico, built in 1958. Candela used a single hypar surface to get an open-air chapel with a pure structural form of high impact. The Cuernavaca Chapel shell is self-supporting with a span of 30 m and dramatic curvature. The open end of the chapel rise to a height of 24 m (Fig. 3).



Figure 3. The Cuernavaca chapel finished and under construction.

In 1958, Candela completed also his most significant work, the *Los Manantiales Restaurant* in Xochimilco, near Mexico City. The Xochimilco shell is composed of four intersecting hypars with free curved edges [4]. The soaring shape at the edges resulted in a simple and gracefully thin shell structure. In the original drawings (Fig. 4), Candela clearly shows the form of *Manantiales Restaurant* shell. It is an eight-sided groin vault composed of four hyperbolic paraboloid saddles that intersect at the center point. The form was original and unexplored at

that time. The innovative use of V-shaped beams allows edges free of stiffening beams and produced a shell thickness of only 4 cm.

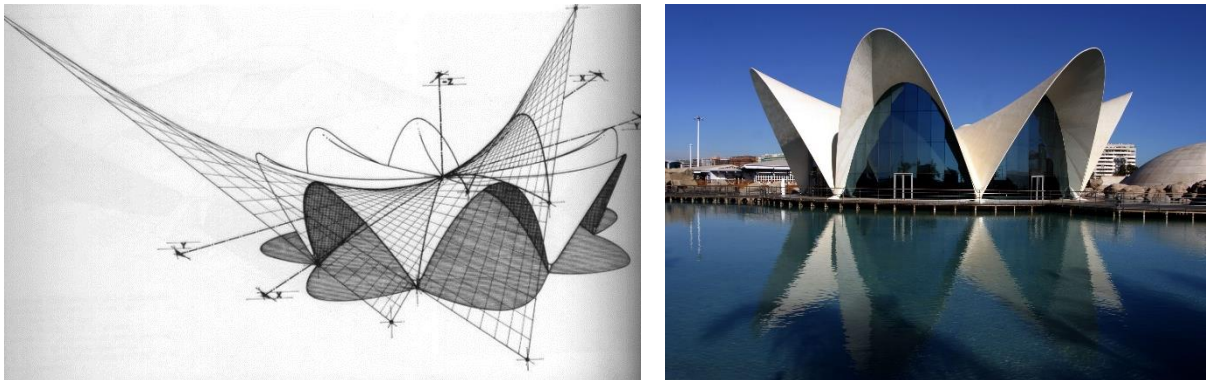


Figure 4. The sketch of *the Mantianales* (Mexico, 1958) and one of the last works of Candela, the Oceanographic park in Valencia (Spain, 1994) on the same shape.

3 THE RDB FACTORY AND THE BI-SAP SYSTEM

3.1 Starting from a brick kiln near Piacenza



Figure 5. The vault built at Milan Fair in 1938 and a leaflet of SAP vault system.

A very innovative firm in the field of brick production developed between the two WW in the surroundings of Piacenza, in northern Italy. Starting from a brick and lime kiln acquired in 1908, the new firm was established in 1934 as *'Fornaci F.lli Rizzi, Donelli, Breviglieri & C.'* that in 1970 became simply RDB s.p.a. The firm introduced a semi-prefabricated floor system that simplified the erection of civil buildings, but also allowed the construction of large span roof for industrial and leisure settlements. In the Milano fair of 1938 a great vault in 'reinforced bricks' built by RDB shown the possibility offered by the new SAP system (the Italian acronym stands for *'Senza Armatura Provvisoria'*, that is 'without provisional centring'). Other innovative product were then developed, such as prestressed floor panels, precast and prestressed concrete beams, and so on.

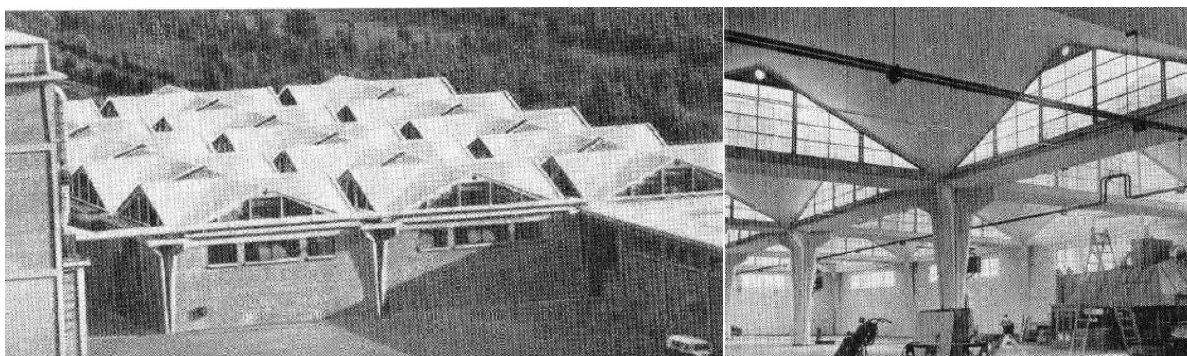


Figure 6. Italp factory, near Pisa. Arch. L. Muzio. IL 70 [6]. On the right, a view of the interior.

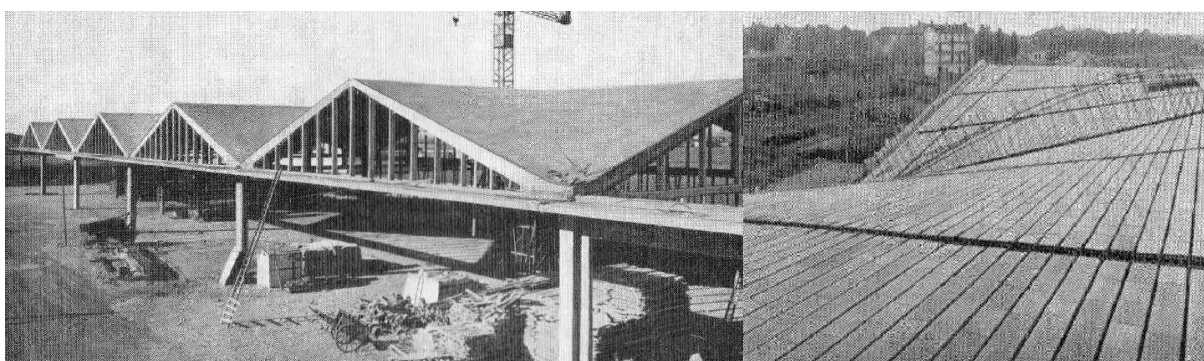


Figure 7. A shelter for car transporters near Torino, ing. S. Bizzarri. IL 71 [6]. On the right, disposition of SAP panels before the concrete casting.

3.2 The Bi-SAP system

The SAP system allowed building curved surfaces, prefabricating on-site light elements with curved shape. After second WW, this technique was applied also for building the new structures covering wide spaces for the developing industry or for public leisure spaces, with prefabricated panels of the desired length. RDB regularly published a bulletin, illustrating the recently built and under construction industrial sheds adopting patented RDB products (Fig. 7), but also giving useful suggestions for the design and verification of such structures.

A particularly interesting application of the SAP system is the BI-SAP (double-SAP) panel that could be adopted for building large shells generated from ruled surfaces. In this way, hyper shells could be built using lightly skewed panels, prefabricated on site, posed along the straight lines forming the hyper surface.

4 THE SPORTS HALL IN CODOGNO

In Codogno (LO), Italy, the BISAP panels were employed to cover a large sports hall built in 1974, about 37×26 m wide, without intermediate supports, resting (mainly) on the four corner pillars. The border pitch beams sustains at the top two crossed beams that separate (and support) the four hyper fields. On each side, the two rafter beams are connected horizontally by prestressed tie beams, in order to minimize displacements and assure the preservation of the original shape.

The prefabricated panels, disposed following the rules generating the hyper surface, form these four fields (Fig. 8). Additional reinforcement is disposed orthogonally and at 45° to the

rib direction in the concrete slab (fig. 9). Probably for lack of confidence with the structural solution adopted, beside the two big crossing beams separating the four hyperbolic fields, some additional slender pillars supporting the border rafters are disposed on the four sides between the main corner pillars, apparently used only for windows support, but designed to collaborate to the bearing system.

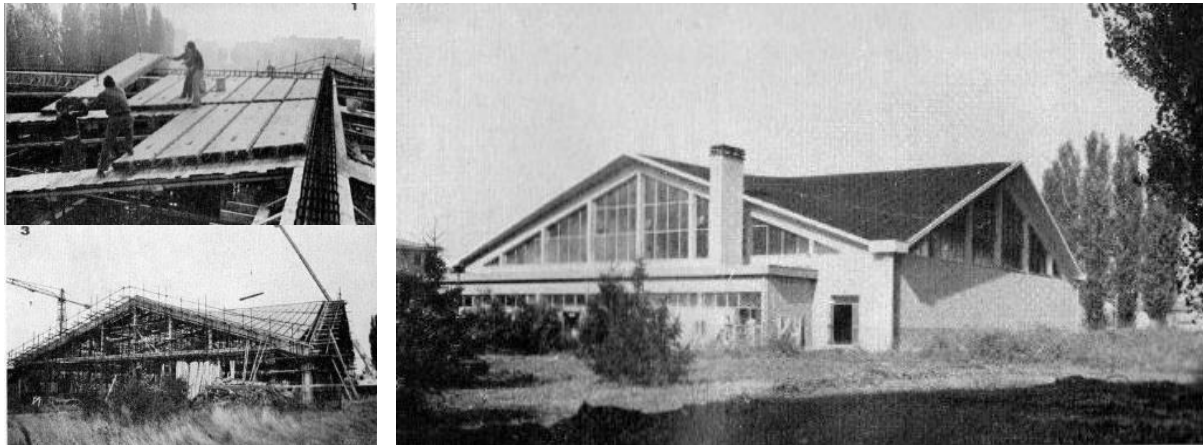


Figure 8. The construction of Codogno Sports Hall and its final appearance. IL 158-159 [7], p.1232.

4.1 Historical documents and original design

The original drawings for the entire sports hall, and the calculations certified by the RDB technical office, were found in the archive of the Municipality of Codogno, which luckily preserved and classified all the material. In this way, it was possible to reach a deeper knowledge of the construction system (concrete rib positions in the roof, reinforcement in the slab and in the beams, etc.) and to have a better definition of the ‘naked’ structural geometry, without claddings and waterproofing layers.

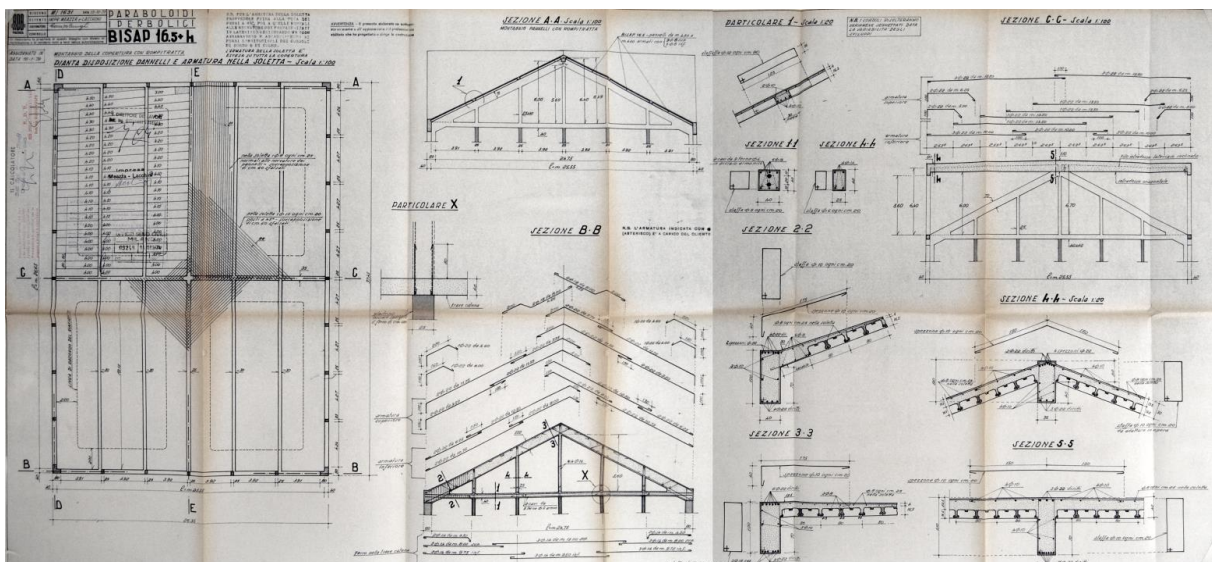


Figure 9. Example of the original drawings for the roof structure and the head gable.

5 STRUCTURAL ANALYSIS

5.1 The in-situ diagnosis campaign

A preliminary in-situ campaign was disposed to control the possible state of decay of the concrete and the reinforcement, in order to avoid an over-estimation of structure resources. In particular, n° 8 concrete cylindrical specimen (100 mm diameter) were extracted from columns and walls and tested in laboratory. The results were compared with the 16 in-situ test performed combining ultrasonic velocity and rebound index. The concrete covering of steel reinforcement was measured in 10 positions, and the concrete cylinders were used to measure the depth of carbonation. P&P Consulting Engineers, from Bergamo, made the tests.

5.2 The seismic assessment

A finite element model of the entire structure was set up, allowing to detect the overall behavior under static dead and live loads according to Italian Code (NTC18, [11]): it must be stressed that the actual loading provisions are far different from those adopted in the design in 1974. Moreover, the building structure was not at all designed for seismic loads, because only in recent years the territory of Codogno was classified in 3rd category (seismicity of moderate intensity), with a reference GPA (ground peak acceleration) of 0.092 g. That posed important questions on the possible strengthening intervention needed, because the building is open to the public and can have moderate crowding: allowing to NTC18, the building belongs to the Usage Class III, and the resulting ‘reference life’ is 75 years.

The model was set up using Straus7 code to simulate the complete structure by means of 4-nodes plate elements for the concrete covering and beam elements for the columns and the main beams. The concrete ribs too were modeled by beam elements, disposed at the calculated offset from the surface, with an adequate rotation of the axis in order to match with the surface of the hypar. Finally, the design pre-stress, depurated from relaxation losses, was applied to the tie beams connecting the four main corner columns. Considering also the structure sustaining the stands for the public, 8252 nodes, connected by 7729 beam and 7708 plate elements were used, producing 49180 equations. The seismic analysis has been conducted with a linear elastic approach: first of all a modal dynamic analysis was performed that allowed detecting the main aspects of structural behavior.

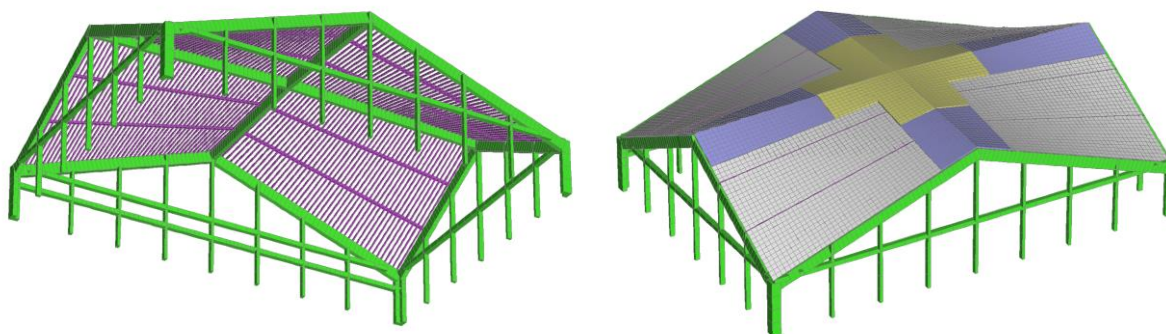


Figure 10. The Straus7 FE model: view from below (with the two cross beams) on the left, and view from the top on the right, different colors showing different shell thickness.

The first three modes excite the structure in the three principal axis's directions, the lower being 2.456 Hz in x (transversal) direction, and a torsional mode appear only at 6th place, for higher frequency values (5.032 Hz, see Table 1 and Figs. 11 and 12). The presence of the walls supporting the gallery increase the horizontal stiffness of one long side, altering slightly the symmetry of the response (see mode 2 in Fig. 11 and mode 6 in Fig. 12).

Table 1: Mode participation for translational/rotational excitation

| Mode # | Frequency (Hz) | Modal Mass (Eng) | Modal Stiff (Eng) | PF-X (%) | PF-Y (%) | PF-Z (%) | PF-RZ (%) |
|--------|----------------|------------------|-------------------|----------|----------|----------|-----------|
| 1 | 2.4561 | 3.6934E+05 | 8.7959E+07 | 70.506 | 0.001 | 0.002 | 0.001 |
| 2 | 3.3730 | 1.4650E+05 | 6.5802E+07 | 0.001 | 57.055 | 0.000 | 3.642 |
| 3 | 3.5574 | 1.6221E+05 | 8.1043E+07 | 0.010 | 0.000 | 14.511 | 0.000 |
| 4 | 4.2796 | 4.2821E+04 | 3.0961E+07 | 0.005 | 4.941 | 0.000 | 0.851 |
| 5 | 4.5621 | 7.1018E+04 | 5.8352E+07 | 19.907 | 0.003 | 0.002 | 0.010 |
| 6 | 5.0319 | 6.8103E+04 | 6.8076E+07 | 0.011 | 0.794 | 0.000 | 46.248 |
| 7 | 5.4197 | 4.9470E+04 | 5.7366E+07 | 0.000 | 1.716 | 0.000 | 7.445 |
| 8 | 5.8253 | 3.1811E+04 | 4.2616E+07 | 0.001 | 9.851 | 0.000 | 1.553 |
| 9 | 6.4518 | 6.2159E+04 | 1.0215E+08 | 0.001 | 0.000 | 0.043 | 0.000 |
| 10 | 6.6768 | 5.4822E+04 | 9.6484E+07 | 2.290 | 0.014 | 10.701 | 0.085 |
| 11 | 6.7630 | 5.7535E+04 | 1.0389E+08 | 0.002 | 7.712 | 0.055 | 28.280 |
| 12 | 7.1368 | 6.5475E+04 | 1.3165E+08 | 3.284 | 0.010 | 2.669 | 0.014 |
| 13 | 7.3690 | 3.4617E+04 | 7.4212E+07 | 0.032 | 0.000 | 14.731 | 0.001 |

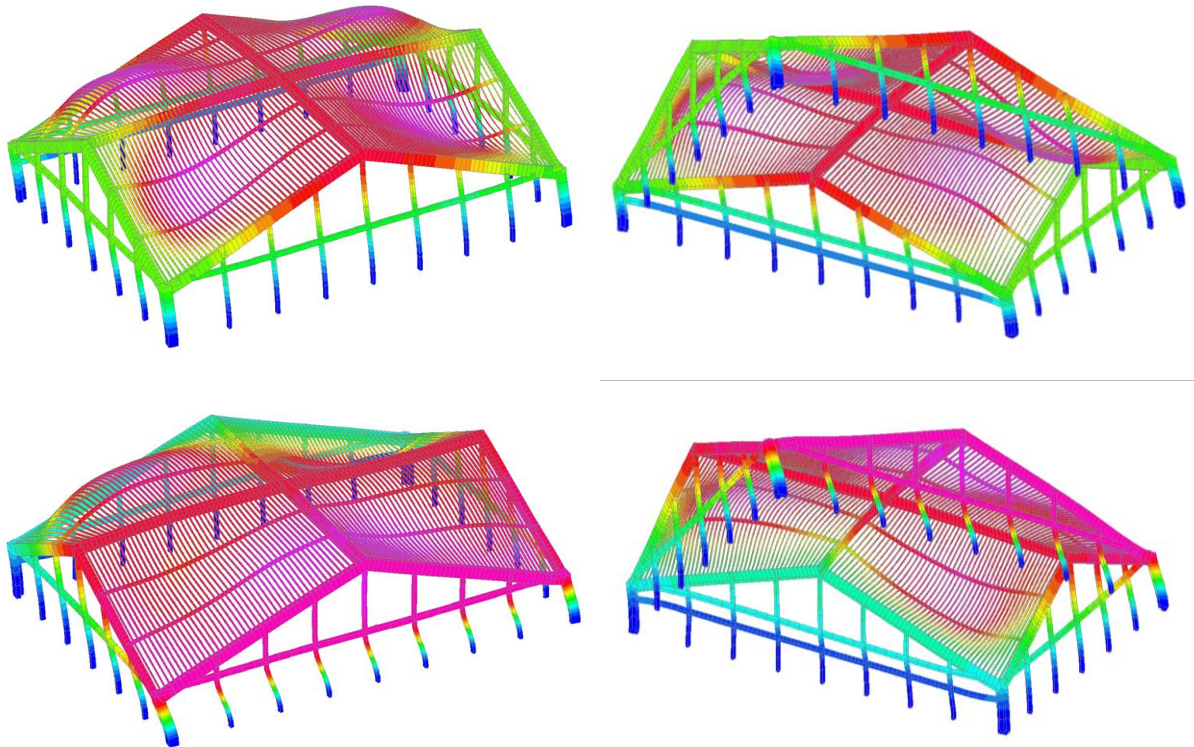


Figure 11. Mode 1 and 2 (flexural) shapes, Top: mode 1 horizontal displacement DX ; bottom, mode 2 horizontal displacement DY . Colored contour levels, view from top (left) and from below (right).

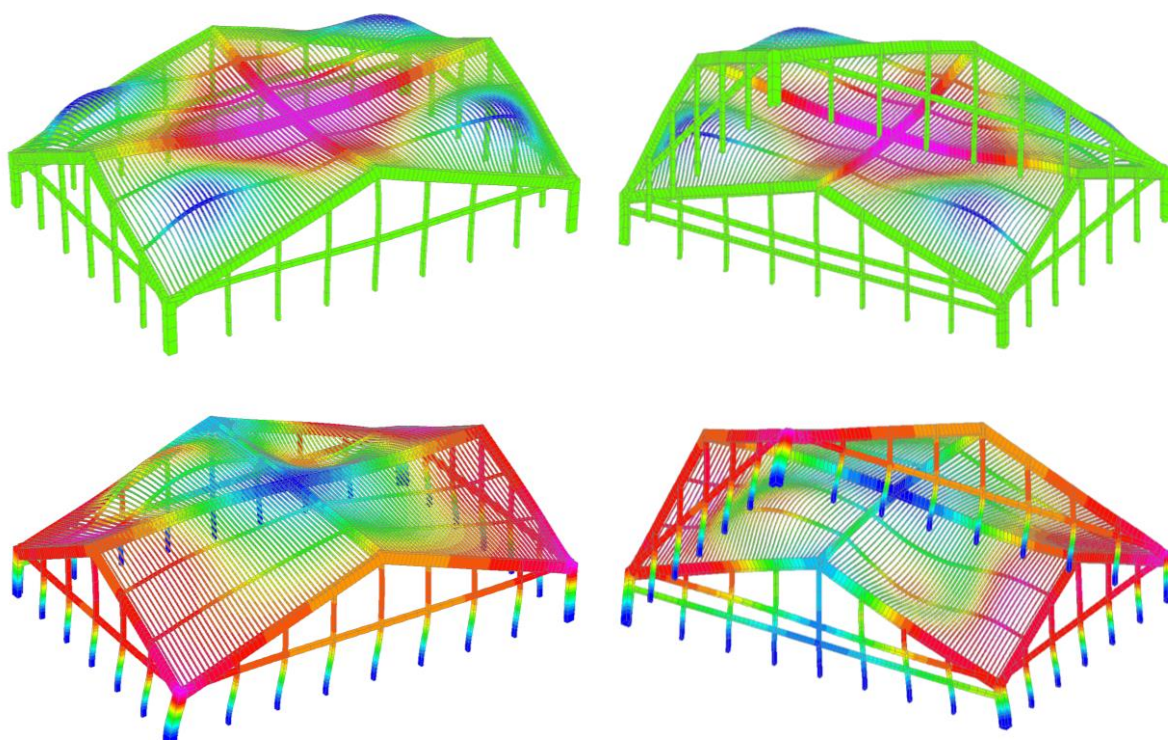


Figure 12. Top: mode 3 vertical displacement DZ ; bottom, mode 6 (torsional) combined DXY displacement. Colored contour levels, view from top (left) and from below (right).

The Spectral Response solver use the mode superposition technique, applying modal excitation factors for each vibration mode; then the spectral values for all modes are calculated from the assigned spectral table by using the corresponding frequency value. The combination of maximum modal displacement values is obtained using SRSS method (Square Root of the Sum of the Squares). The design spectrum, calculated from NTC18 for Codogno, has an amplitude of $a_g S = 0.138 g$.

The calculated stresses are then input in a verification program that check the capability of each structural member: the procedure is repeated reducing spectral amplification until the check is positive for all the members. A partial security coefficient take into account the ‘level of knowledge’ (LC) of materials and geometry obtained by visual and material inspections: LC2 was assumed, obtaining a factor of confidence of 1.2.

The more engaged members appear to be the L-shaped corner columns, together with the closer slender columns that reach the gables; even the lower end of the rafters reach the limit state. The maximum capacity is attained with a spectral amplification of only $a_g S = 0.08 g$, that leads to a ratio between capacity and demand:

$$\zeta_E = 0.080 g / 0.138 g = 0.58$$

Nevertheless, it must be stressed that Italian Code request for existing buildings in Usage Class III a minimum value of $\zeta_E \geq 0.6$ to be reached in an ‘improvement intervention’ (see § 8.4.2 of NTC18, [11]).

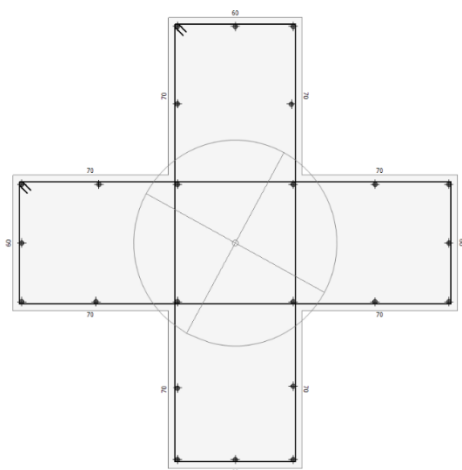


Figure 13. Enlarged cross section of corner columns

5.3 The strengthening design

In order to reach a satisfying capacity of the structure and reduce the vulnerability, the intervention chosen try to focus on the main weakness outlined by the calculations: the deformations and the shear resistance are concentrated in the corner columns.

Therefore, their section was increased changing from an L to an enlarged cross section (see Fig. 13), with an important change in stiffness. In this way, deformation amplitude was strongly reduced, and the structure results verified for the design spectrum amplitude forecast by the code, obtaining moreover a value of $\zeta_E = 1.01 \geq 1.$, that means a complete ‘upgrade intervention’, in the sense of § 8.4.3 of NT18 [11].

6 CONCLUSIONS

The structure of the Codogno Sports Hall demonstrated to be still very effective, and is very close to satisfying code requirements even in present conditions. Nevertheless, with a moderate upgrade only on the corner columns, it is able to reach a complete compliance to code provision for new buildings towards seismic assessment, showing the clever vision of the original design that worth some minor conservation interventions.

Acknowledgements. The administration of Codogno Municipality and the staff of historical archive is gratefully acknowledged for the cooperation in the research of original drawings; eng. Guido Campana, from Campana & Migliorin, is acknowledged for structural verifications.

REFERENCES

- [1] Sprague, T.S. ‘Beauty, Versatility, Practicality’: the Rise of Hyperbolic Paraboloids in Post-War America (1950-1962). *Construction History*, vol. 28, no. 1, pp. 165–184, (2013). JSTOR, <http://www.jstor.org/stable/43856033>.
- [2] Engel, H. *Structure Systems*. (1968) London: Iliffe books.
- [3] Journal of the International Association for Shell and Spatial Structures n. 163, *Special Issue for the Centenary of the Birth of Félix Candela*, Vol. 51 (2010) No. 1 March
- [4] Burger, N. and Billington, D.P.: Felix Candela, elegance and endurance: an examination of the Xochimilco shell, *Journal of the International Association for Shell and Spatial Structures*, Vol. 47 (2006) No. 3 December n. 152, pp. 271-278(8).
- [5] Modica, M. and Santarella, F.: *Paraboloidi: un patrimonio dimenticato dell'architettura moderna*. Firenze, Edifir (2014).
- [6] Paolini C. and Pugnaletto, M.: Reinforced brick lightweight vaults. *TEMA*, vol. 3, No. 1 (2017).
- [7] IL, *Il Laterizio, bollettino tecnico RDB*, RDB, Piacenza (1961) n. 70 e 71.

- [8] IL, *Il Laterizio, bollettino tecnico RDB*, RDB, Piacenza (1976) n. 158-159.
- [9] Zienkiewicz, O.C. and Taylor, R.L. *The finite element method*. McGraw Hill, Vol. I., (1989), Vol. II, (1991).
- [10] Straus7, *Theoretical Manual*. Sydney Aus.: Strand7 Pty Limited, 2005.
- [11] D.M. 17.01.2018 - Norme tecniche per le costruzioni, *Supplemento ordinario alla Gazzetta Ufficiale n. 42 del 20 febbraio 2018 - Serie generale* (2018).
- [12] Circolare n.7 del 21.01.2019 Istruzioni per l'applicazione dell'Aggiornamento delle «Norme tecniche per le costruzioni» di cui al D.M 17 gennaio 2018. *S.O. alla Gazzetta Ufficiale n.35 del 11 febbraio 2019 - Serie generale* (2019).